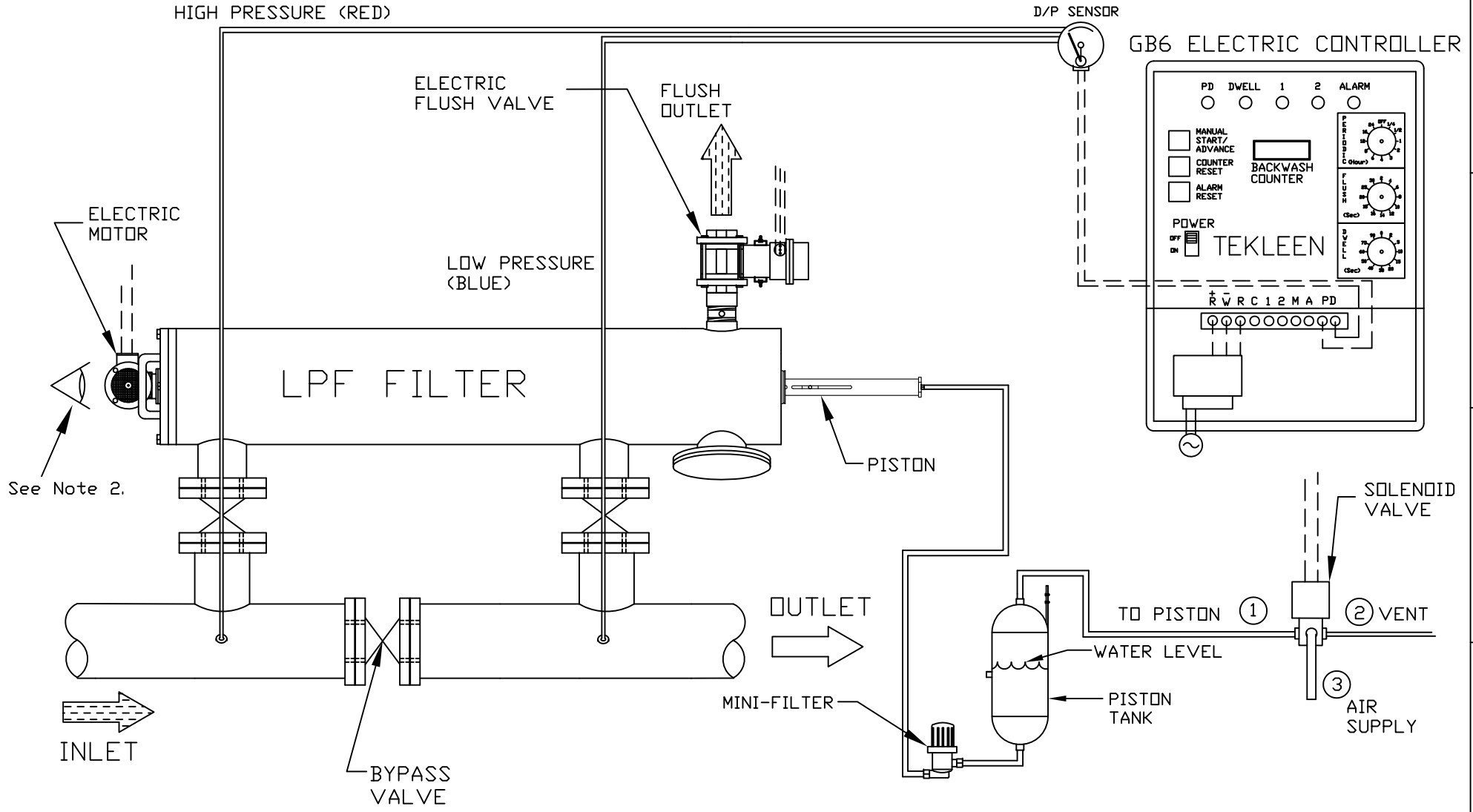


REVISIONS				
REV	ZONE	DESCRIPTION	DATE	APPROVED



See Note 2.

○	JUNCTION
◌	NO JUNCTION
---	ELECTRICAL CONNECTION
==	HYDRAULIC CONNECTION

- NOTES:**
1. Electrical components are connected to a motor board, relays, circuit breaker, & transformer that are located inside electric controller box.
 2. Motor must rotate counter clockwise from viewpoint for filters that contain a screen with area less than 5.0 sq. ft. (I.E. models LPF2-SP, 2-XLP, 3-LP, 3-SP, 4-LPE, 4-P & 6-P), Motor must rotate clockwise for all other filters.

UNLESS OTHERWISE SPECIFIED DIMENSIONS ARE IN INCHES TOLERANCES		AUTOMATIC FILTERS, INC. 2672 S. LA CIENEGA BLVD. LOS ANGELES, CA 90034 (310) 839-2828 FAX (310) 839-6878	
DECIMALS .XX ± .05 .XXX ± .01	ANGULAR ± 0.5 DEG.	TITLE WIRING LAYOUT FOR LPF FILTER WITH GB6 CONTROLLER, ELECTRIC FLUSH VALVE, AND SOLENOID VENT WITH PISTON TANK	
DRAWN R. LAM	DATE 08/04/17	SIZE A	DWG NO. WIRE-LPFG6-EFV-LAY-02
CHECKED		REV N/A	
DESIGN FOR:		NOT TO SCALE	SHEET 1 OF 1